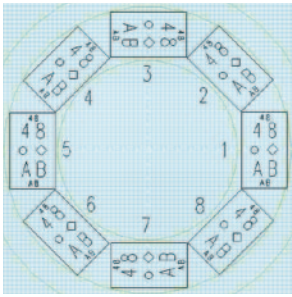


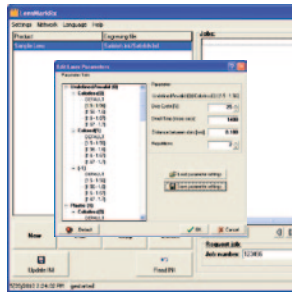
Lens-Engraver-LC

LASER MARKING FOR
FREE FORM LENSES

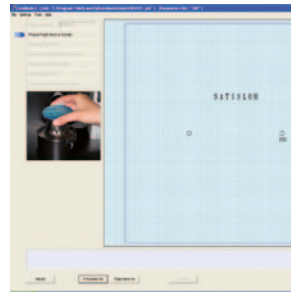




Wide range of possible engravings



Easy to use Satisloh LensMark RX interface software



Operation screen of laser

FEATURES + BENEFITS

The Lens-Engraver-LC a highly reliable CO₂ laser engraver designed to perform, high quality semi-visible and visible markings on progressive-addition and single vision free-form/organic lenses. It precisely engraves any geometric shape including micro-circles, characters, logos (dxf or dwg) and product brands on all organic lens materials, uncoated, hard, AR coated or tinted lenses and convex, concave.

With the power adjustment kit, it guarantees the highest consistency, quality and visibility of the engravings.

The system is available in three configurations, desktop, standalone and automated, allowing you to choose the system that best fits the needs of your production lab. Both desktop and standalone can be upgraded to the automated configuration.

- Low operating costs and costs per lens, due to low consumable processing and minimal maintenance required
- Short process time
- High reliability and yield with high quality and reproducible results
- Small footprint
- Continuous operation, long lifetime laser source
- Safe system, secure operation- requires no protective eyewear for operator
- Sealed CO₂ laser source, requires no gas installation
- User friendly software for operation, calibration, control and graphical layout design
- Fixed or variable engraving objects
- Patented technology for semi-visible engraving on tinted lenses

OPTIONS

- Manual system upgradable to automated loading/unloading system
- Lens drying option
- Extend machine capabilities to engrave logos and brands on the front surface of lenses along the frame line

TECHNICAL INFORMATION

Dimensions (wxdxh)	Desktop: 515 x 1340 x 827 mm / 20 x 52 x 32 inches Standalone: 1056 x 1347 x 1322 mm / 41 x 53 x 52 inches Automated: 1188 x 1661 x 1387 mm / 46 x 65 x 54 inches
Weight	Desktop: 210 kg / 463 lbs Standalone: 316 kg / 697 lbs Automated: 400 kg / 882 lbs
Materials	All organic lens material like CR39, high index material, Trivex and polycarbonate
Power	Automated System: 110 or 220 VAC, 6A single phase Manual System: 100-240 VAC, 6A single phase
Working Range	Convex and concave engravings anywhere on the lens up to 80 mm diameter
Laser	Sealed off CO ₂
Wave length	10200- 10800 nm
Communications	VCA/OMA via RS232 or Ethernet LDCS
Safety	Class 1 laser product (CE and CDRH)

CONTACT

Satisloh AG
Neuhofstrasse 12
CH- 6340 Baar
Switzerland
Phone: +41 (0) 41766 16 16
email: info@satisloh.com

www.satisloh.com

North America

Europe

Asia

Central & South America

Sales

Phone: +1 262 255 6001
Email: info.usa@satisloh.com
Phone: +49 (0) 6441 912 0
Email: info.de@satisloh.com
Phone: +852 27 56 7711
Email: info.asia@satisloh.com
Phone: +55 11 2930 8600
Email: info.latam@satisloh.com

Service

+1 262 255 6001
service.usa@satisloh.com
+49 (0) 6441 912 222
service.de@satisloh.com
+852 27 56 7654
service.asia@satisloh.com
+55 11 2930 8600 (pt)
+57 300 798 3374 (es)
service.latam@satisloh.com

satisloh®