



E-TICKET SYSTEM

DIGITAL JOB TICKET SYSTEM FOR RX LABS

E-Ticket System

DIGITAL. REUSABLE. DYNAMIC.

Satisloh's E-Ticket system replaces paper tickets with a smarter, fully digital workflow that streamlines every step of lens production. Labs gain powerful job-management tools, and real-time data updates that provide the exact data each department needs.

The **E-Ticket System** is built on three pillars to digitize, transform and streamline your entire job ticket management process:

Hardware: Robust **E-Ticket Tags** and reliable **E-Ticket Gateway** form the physical backbone of the system. Designed specifically for Rx labs, the tags feature a four-color display, multicolor LEDs, operator interaction buttons, multi-page views, and long-lasting battery performance. Together with strategically placed E-Ticket Gateways, they ensure seamless, wireless data updates throughout the entire production floor.

Software: At the heart of the solution is the **E-Ticket Manager software**. It integrates with your existing LMS, ERP, or MES to deliver

real-time information to every tag. With customizable templates, workflow-based data display, full job-ticket access, job search, and hot-job flagging, the software ensures the right information reaches the right station at the right time.

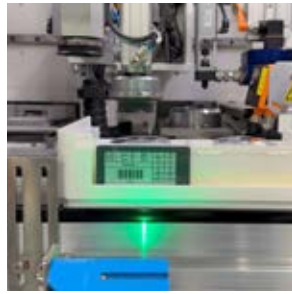
Services: What truly sets the E-Ticket System apart is Satisloh's **consulting** and **implementation expertise**. Our specialists analyze your lab's workflow, job volume, layout, and goals to design the optimal solution. We handle installation, software integration, template creation, LED logic, configuration, training, and go-live support, delivering a fully customized, ready-to-use system tailored to your lab.

Easy to implement and intuitive to use, E-Ticket System brings visual management, clean operations, and seamless production flow across the entire lab.





*Coating batch automation:
Batch status, loader communication, real-time coating progress.*



*Seamless implementation using
existing barcode readers*



*Manual workstations can be
added across all lab areas,
including warehouse, coating
area or shipping department.*



*Four color display: black, white,
red & yellow. Labs can configure
the display to address specific
needs.*

FEATURES + BENEFITS

IDENTIFY ANY JOB ANYTIME, ANYWHERE

- Easily flag specific jobs on-the-fly using the LED indicators (Job Search, Hot Job identification), minimize time spent searching for jobs.
- Assign specific LED colors to help with job sorting and batching in coating.

REAL-TIME DATA

- Instant visibility into job status in real-time, allowing supervisors and operators to monitor production progress and make faster decisions, enabled by E-Ticket Gateways with IoT technology.

READABILITY

- Robust, consistent, clear job information and bar code reading, eliminating issues associated with printed tickets.
- E-Ticket Tag shows relevant information specific to each department, enhancing efficiency.
- Multi-page display, allows operators to scroll for more information on the tag, very useful for wordy languages (e.g. Chinese, Thai).

SEAMLESS IMPLEMENTATION

- Works with all/most standard bar-code scanners, simplifying implementation.
- Communicates easily with LMS, ERP, and MES-360 systems.

WASTE REDUCTION & COST SAVINGS

- Going paperless and reusing the E-Ticket Tag, labs significantly reduce waste production and costs, contributing to a more sustainable environment and making operations more cost-effective.

EXPERT CONSULTING & IMPLEMENTATION

- We follow a proven 5-step process; 1. Consult, 2. Design, 3. Implement, 4. Configure, and 5. Test, truly sets us apart, to deliver a fully customized E-Ticket System for your lab's workflows.

EXTENDED USAGE

- Pick-to-Light for fast semi-finished lens and consumables picking and frame matching - blinking E-Ticket Tags guide staff to correct shelf, eliminating searches, reducing picking errors, and accelerating handling.
- Sort-by-light enables operators to identify multiple jobs simultaneously, for example, when organizing or batch-processing jobs in the coating area.

With E-Ticket Manager, labs can define workflows, change displayed information, create and edit the E-Ticket Tag layout templates, access and view complete job ticket in PDF format, flag hot jobs and search for specific jobs.





Visual job information in digital format

TECHNICAL SPECIFICATIONS

Satisloh's E-Ticket System supports two types of E-Ticket Tags: E-Ticket Tag I & E-Ticket Tag II



	E-Ticket Tag II Color	E-Ticket Tag II B&W	E-Ticket Tag I
Dimensions	80.1 × 40.4 × 13.1 mm (excl. LED) 3.15 × 1.59 × 0.52 inches (excl. LED)	80.1 × 40.4 × 13.1 mm (excl. LED) 3.15 × 1.59 × 0.52 inches (excl. LED)	80 × 41.1 × 11.4 mm (excl. LED) 3.15 × 1.62 × 0.45 inches (excl. LED)
Active display area	58.3 × 30.7 mm	58.3 × 30.7 mm	60.1 × 30.7 mm
Display colors	Black, white, red & yellow	Black & white	Black, white, red & yellow
LED	7 colors	7 colors	7 colors
Buttons	2	2	N/A
Battery powered	Yes	Yes	Yes
Battery life	5 years*	5 years*	5 years*
Page load time	~15 seconds	~4 seconds	~15 seconds
Multi-page template	up-to 12 pages	up-to 12 pages	N/A
Protection class	IP65	IP65	IP54

* 2 updates per day

All technical data subject to change without notice. Verify details with Satisloh

CONTACT

Satisloh AG
Neuhofstrasse 12
CH- 6340 Baar
Switzerland
Telephone: +41 (0) 41766 16 16
Email: info@satisloh.com

www.satisloh.com

North America

Europe

Asia

Central & South America

Sales
Telephone: +1 262 255 6001
Email: info.usa@satisloh.com
Telephone: +49 (0) 6441 912 0
Email: info.de@satisloh.com
Telephone: +852 27 56 7711
Email: info.asia@satisloh.com
Telephone: +55 (11) 2930 8600
Email: info.latam@satisloh.com

Service
+1 262 255 6001
service.usa@satisloh.com
+39 02 33 55 66 77
service.it@satisloh.com
+852 27 56 7654
service.asia@satisloh.com
+55 (11) 2930 8600 (pt)
+57 300 798 3374 (es)
service.latam@satisloh.com

satisloh®